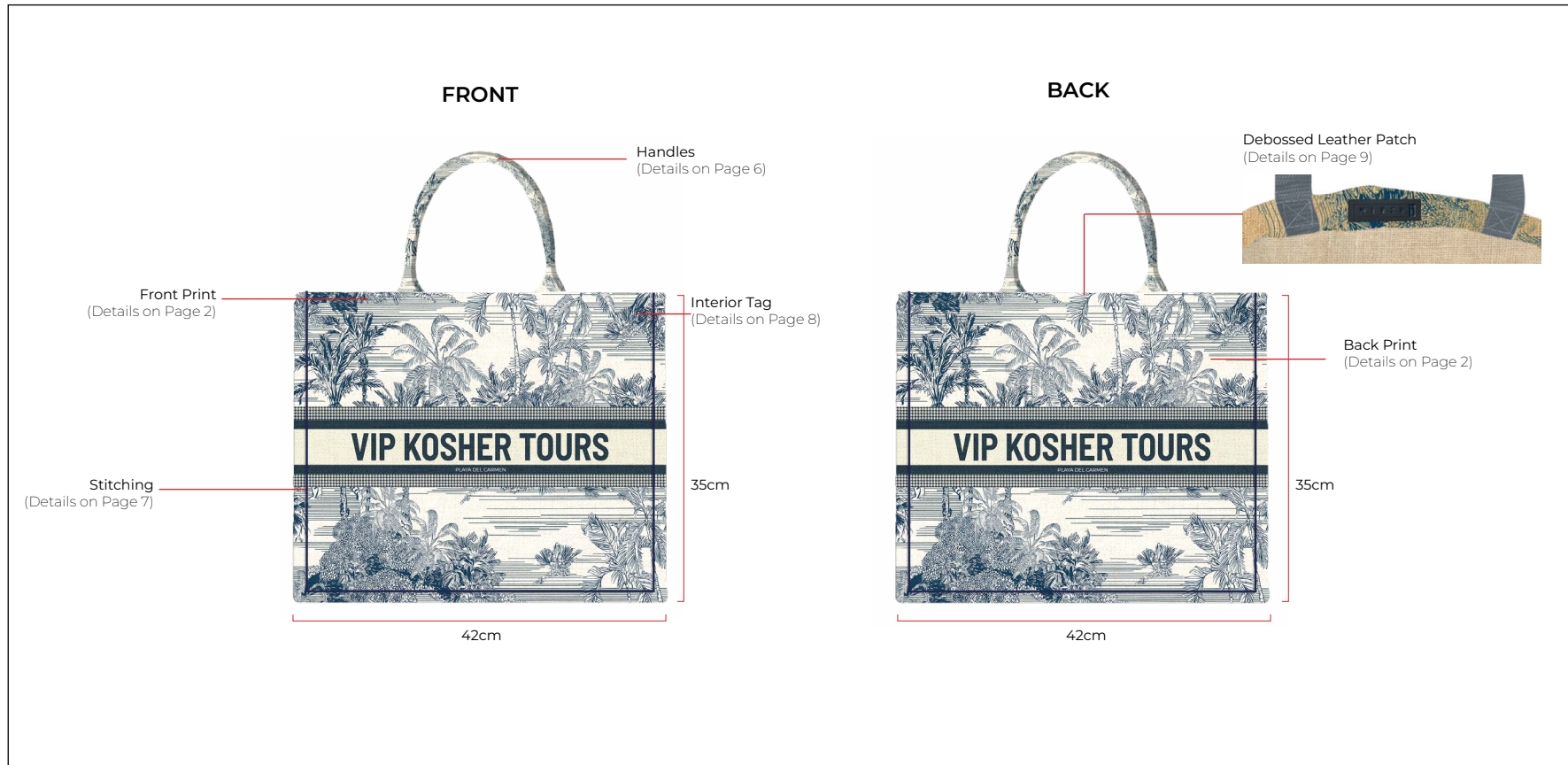


OVERVIEW



**QUANTITY:** 1000

**MATERIAL:** Jute

**WEIGHT:** 16 oz

**DIMENSIONS:** 42cm (L) x 35cm (H) x 18.5cm (W)

**PRINT:** Full Image; 2 Sides (Same)

**GUSSETS PRINT:** 2 Colors; 2 sides (Different)

**HANDLE LENGTH:** 50cm (L) x 5cm (W) (Wrapped)

**HANDLE COLOR / MATERIAL:** Material match

**NOTE:** Embroidered Piping, folded and sewn at the top.

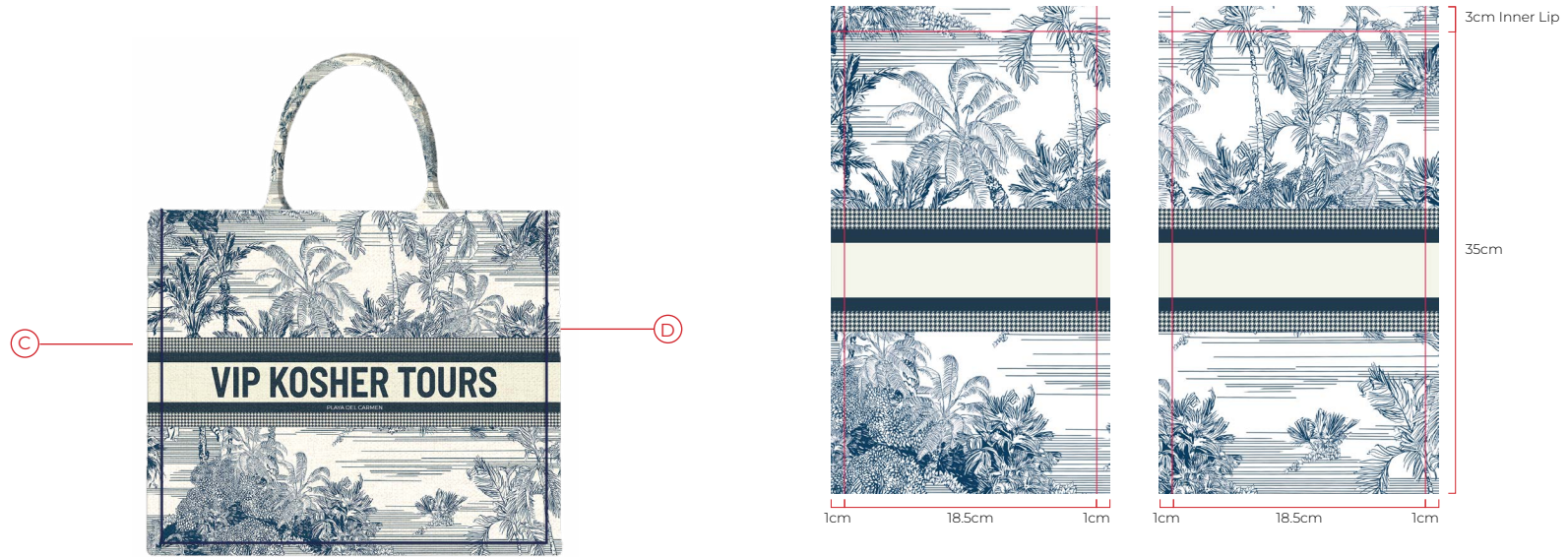
**DEBOSSED LEATHER TAG**

FRONT/BACK PRINT



COMPONENT	MATERIAL	COLOR
A. FRONT/BACK	JUTE	FRONT & BACK PRINT
FRONT & BACK PRINT		

GUSSETS PRINTS



COMPONENT	MATERIAL	COLOR
C. LEFT GUSSET	JUTE	LEFT GUSSET PRINT
LEFT GUSSET PRINT		
D. RIGHT GUSSET	JUTE	RIGHT GUSSET PRINT
RIGHT GUSSET PRINT		

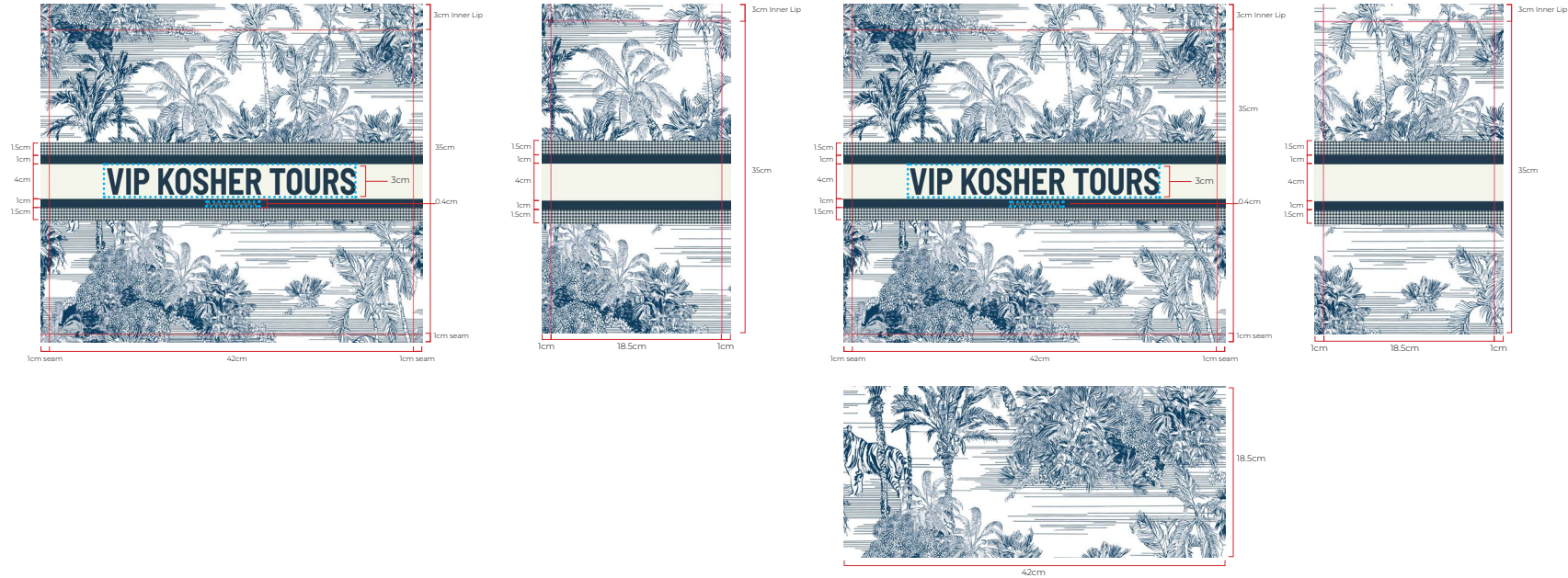
BOTTOM PRINT



E

COMPONENT	MATERIAL	COLOR
E. BOTTOM	JUTE	BOTTOM PRINT
BOTTOM PRINT		

DIELINE



COMPONENT	MATERIAL	COLOR
A. FRONT/BACK	JUTE	FRONT & BACK PRINT
FRONT & BACK PRINT		
C. LEFT GUSSET	JUTE	LEFT GUSSET PRINT
LEFT GUSSET PRINT		
D. RIGHT GUSSET	JUTE	RIGHT GUSSET PRINT
RIGHT GUSSET PRINT		
E. BOTTOM	JUTE	BOTTOM PRINT
BOTTOM PRINT		

HANDLES



COMPONENT	MATERIAL	COLOR
E. HANDLES	JUTE	HANDLES PRINT

STITCHING



COMPONENT	MATERIAL	COLOR
F. STITCHING	EMBROIDERY	PMS 7546 C

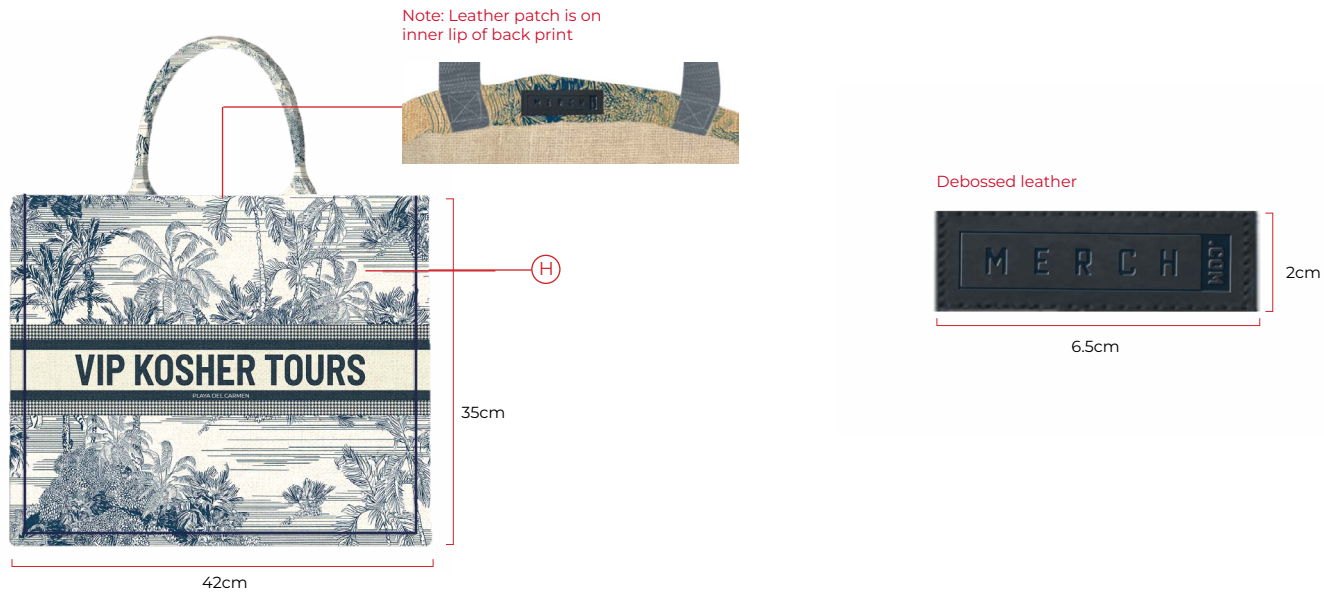
INSIDE TAG



COMPONENT	MATERIAL	COLOR
G. WOVEN TAG	POLY WOVEN TAG	NEUTRAL BLACK
		WHITE



DEBOSSED LEATHER TAG



COMPONENT	MATERIAL	COLOR
H. EMBOSSED LEATHER TAG	LEATHER	PMS 7546 C