

REVERSIBLE BUCKET HAT

PMS 2745 C

PMS 306 C

Artwork Layout

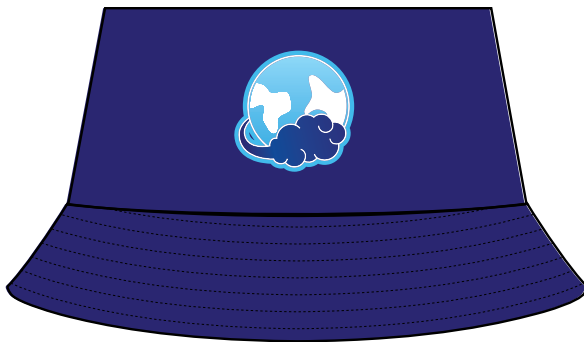
NOTE: ART SHOWN AT 30%

Hat Circumference: 24.6"

Brim Size: 2.25" H

Crown Size: 3.375" H

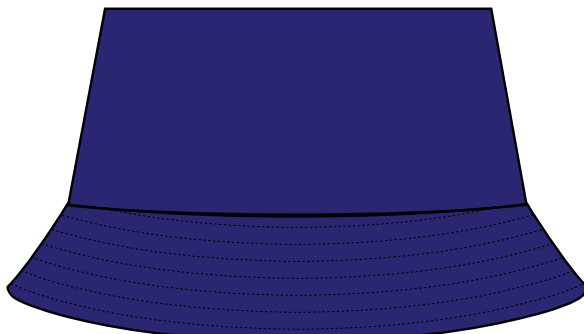
Black line marks product edge
Black Dotted Line marks Stitch Line



FRONT - EXTERIOR SIDE



FRONT - INTERIOR SIDE



BACK - EXTERIOR SIDE



BACK - INTERIOR SIDE

DESIGN INFORMATION

Due to material content and printing process, some inconsistencies in color may be observed.

Artwork may appear slightly skewed due to the nature of the fabric and sewing process.

Artwork is printed CMYK, up to 2 PMS colors can be called out for reference only.

Thread color will default to matching primary brim color. Artwork on brim will have stitching over it.

For best results, all lineweight should be at least 0.5mm.

REVERSIBLE BUCKET HAT

PMS 2745 C

PMS 306 C

Artwork Layout

NOTE: ART SHOWN AT 30%

Hat Circumference: 24.6"

Brim Size: 2.25" H

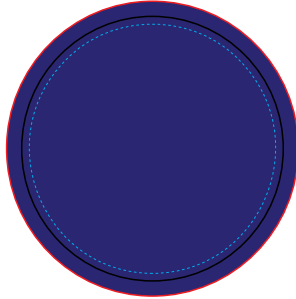
Crown Size: 3.375" H

Blue dotted line marks artwork safe zone

All artwork must bleed to red line

Black line marks product edge

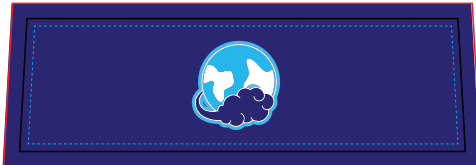
Top - EXTERIOR



Top - INTERIOR



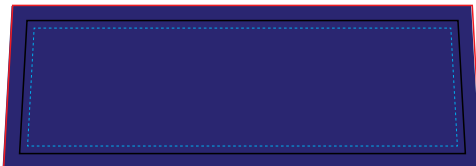
Front Crown - EXTERIOR



Front Crown - INTERIOR



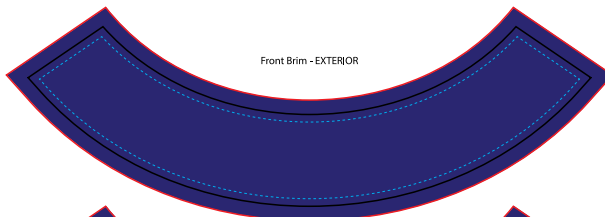
Back Crown - EXTERIOR



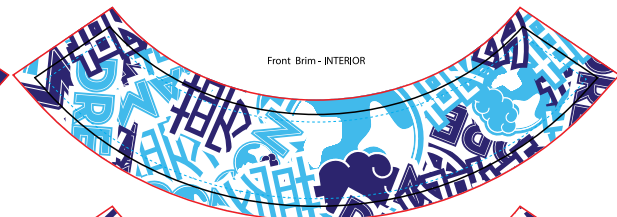
Back Crown - INTERIOR



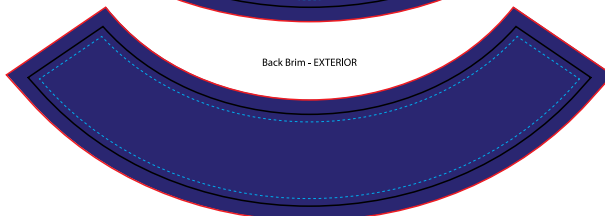
Front Brim - EXTERIOR



Front Brim - INTERIOR



Back Brim - EXTERIOR



Back Brim - INTERIOR



DESIGN INFORMATION

Due to material content and printing process, some inconsistencies in color may be observed.

Artwork may appear slightly skewed due to the nature of the fabric and sewing process.

Artwork is printed CMYK, up to 2 PMS colors can be called out for reference only.

Thread color will default to matching primary brim color. Artwork on brim will have stitching over it.

For best results, all lineweight should be at least 0.5mm.